

MARCONI SPY

Data Logger via radio



La soluzione globale nel controllo via radio

Led rosso: allarme in corso
Led verde: logger attivo

Pulsante per la partenza del
logger e per la marcatura
d'evento (Autocontrollo)

Indicazione della potenza
di trasmissione radio

Indicazione della quantità
di dati nella memoria

Ultimi valori
memorizzati

Conformità alla
normativa EN12830



Ref:06169

NF EN 12830 ST BD 1

Marconi SPY RF



Ospedale



Contenitori refrigerati



Distribuzione pasti



Sale operatorie



Farmacie








Laboratori



Ene



Condizionamento

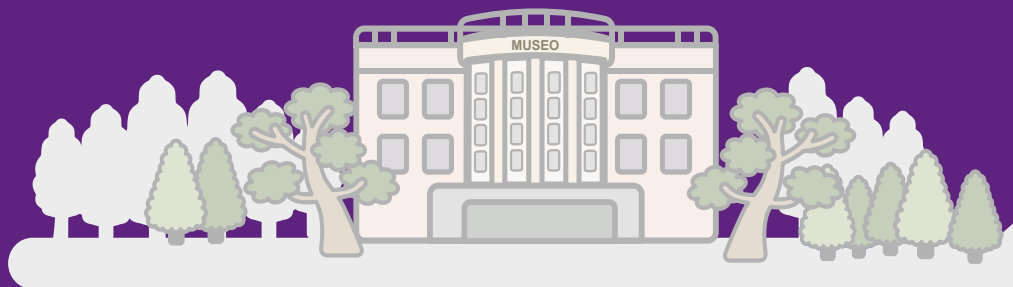
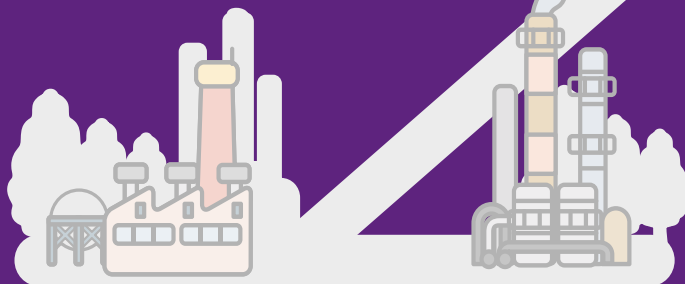
-  Temperatura
-  Umidità
-  mA
-  On/Off
-  Allarme



Processi



Industria



Conservazione archivi

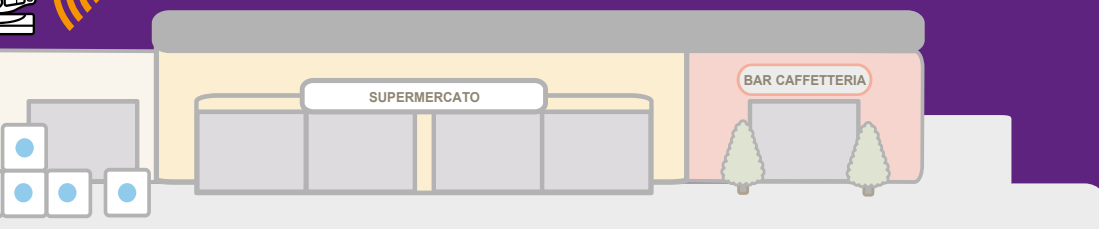
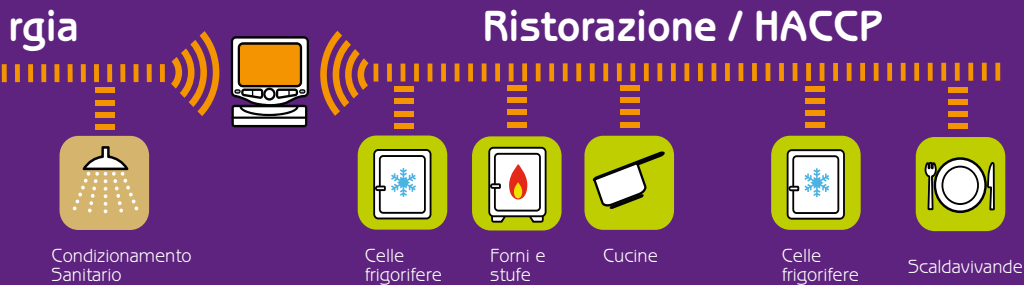


Conservazione opere d'arte

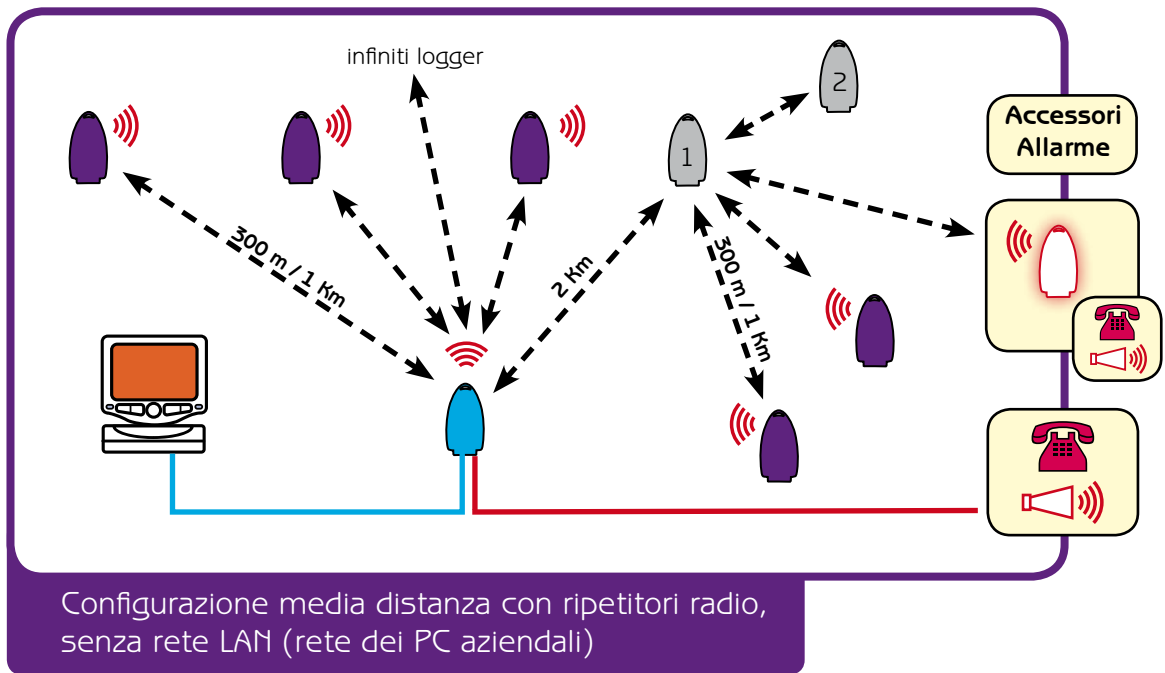
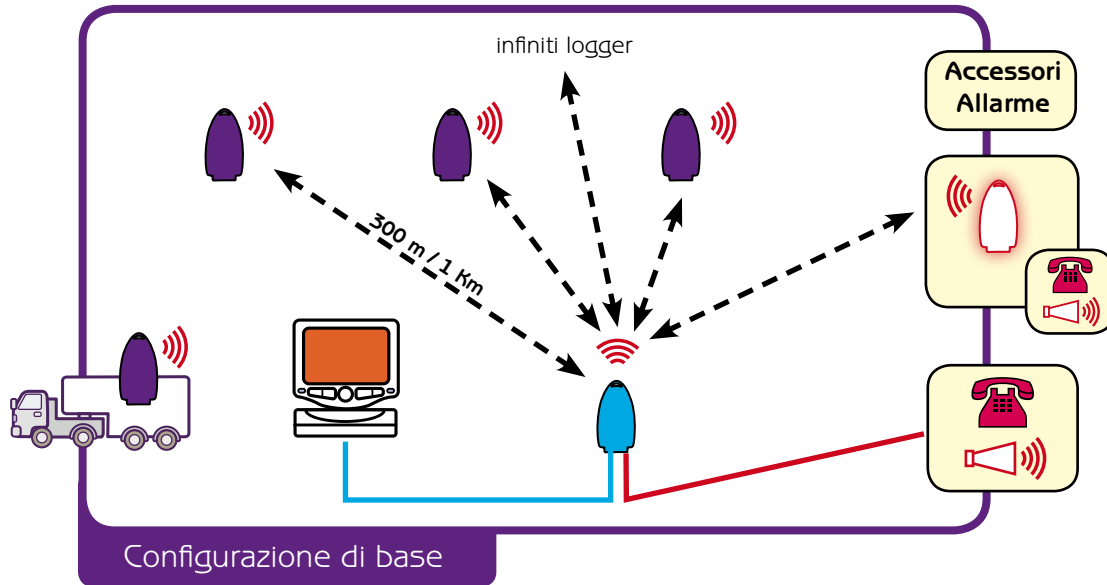
Musei
















La soluzione globale nel controllo via radio

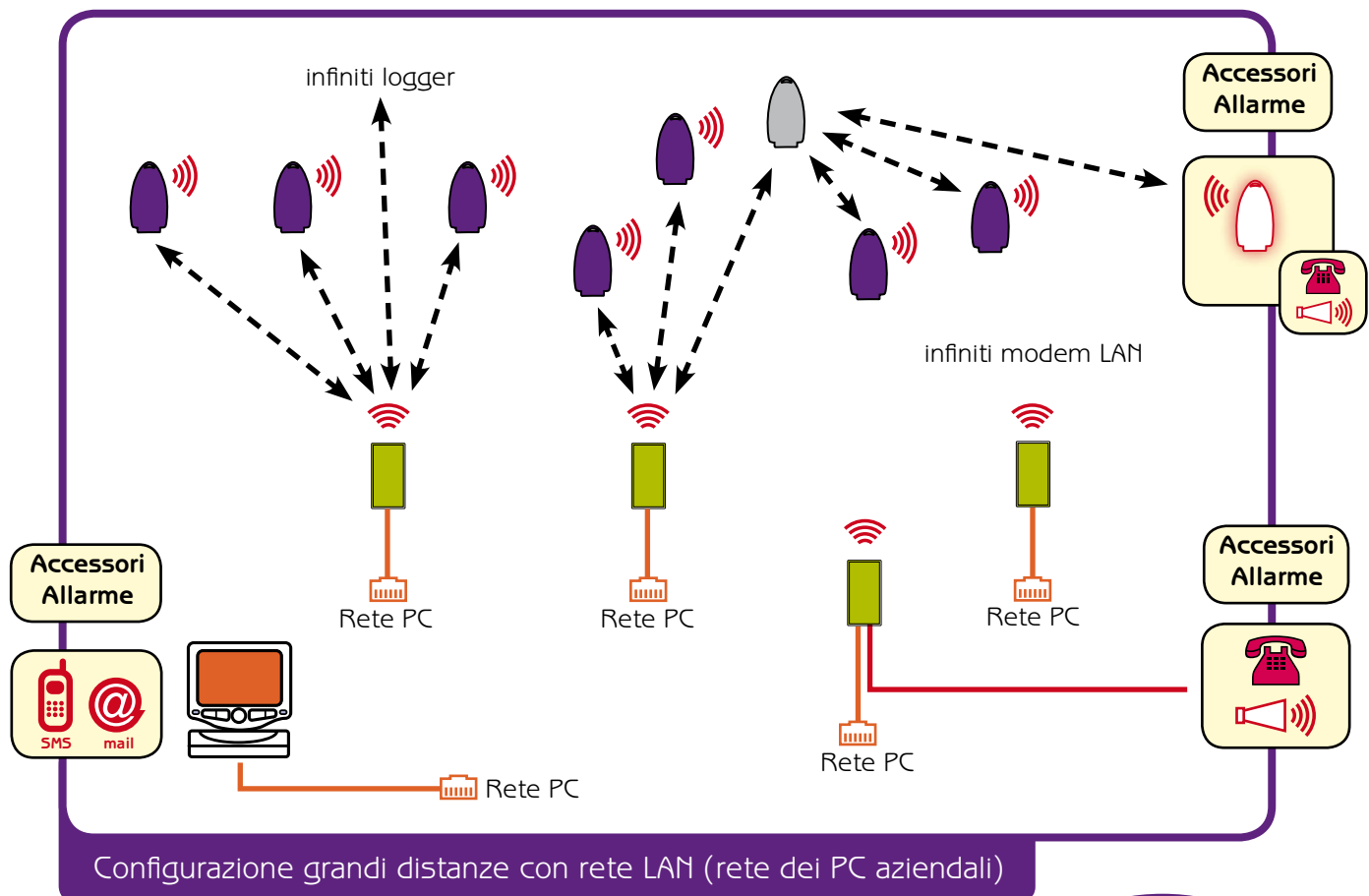


Esempi di configurazione



Legenda

- | | | | | | |
|---|-----------------------|---|--|---|-------------------------------|
|  | SPY RF Logger |  | Collegamento Ethernet LAN |  | Invio SMS tramite modem GSM |
|  | SPY RF Ripetitore |  | Collegamento USB |  | Invio e-mail tramite PC |
|  | SPY RF Ricevitore USB |  | Collegamento ON/OFF |  | Segnalatore d'allarme |
|  | SPY RF Alarm |  | Trasmissione radio 868 MHz bidirezionale |  | Combinatore telefonico vocale |
|  | SPY RF Ricevitore LAN | | | | |



Controllo della temperatura su termoblock posti sotto cappa

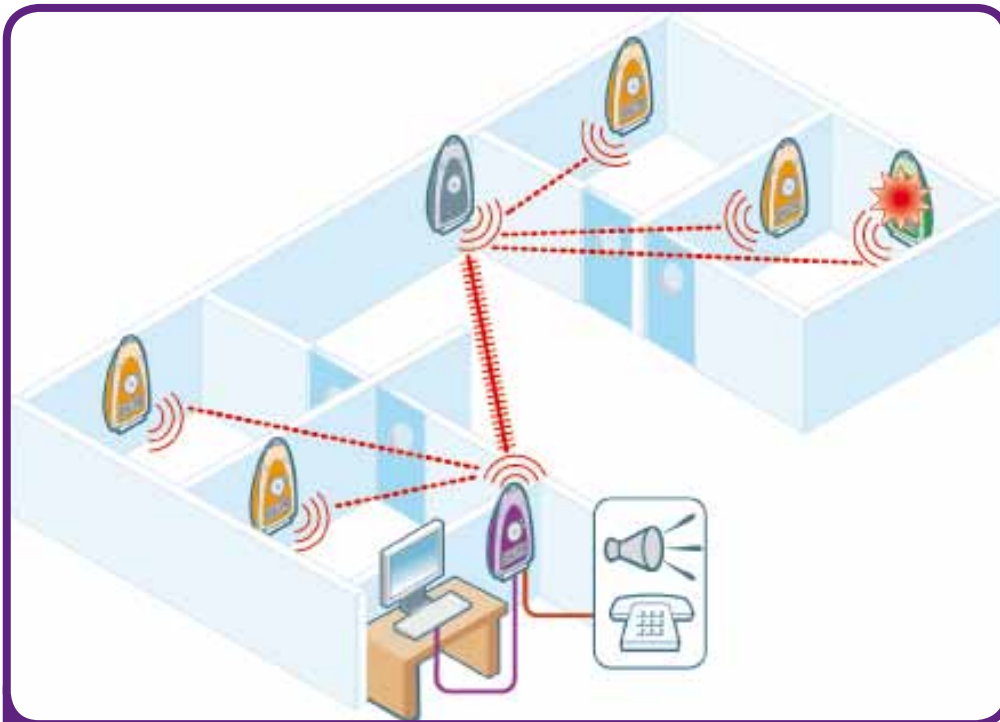


Controllo temperatura bagnomaria

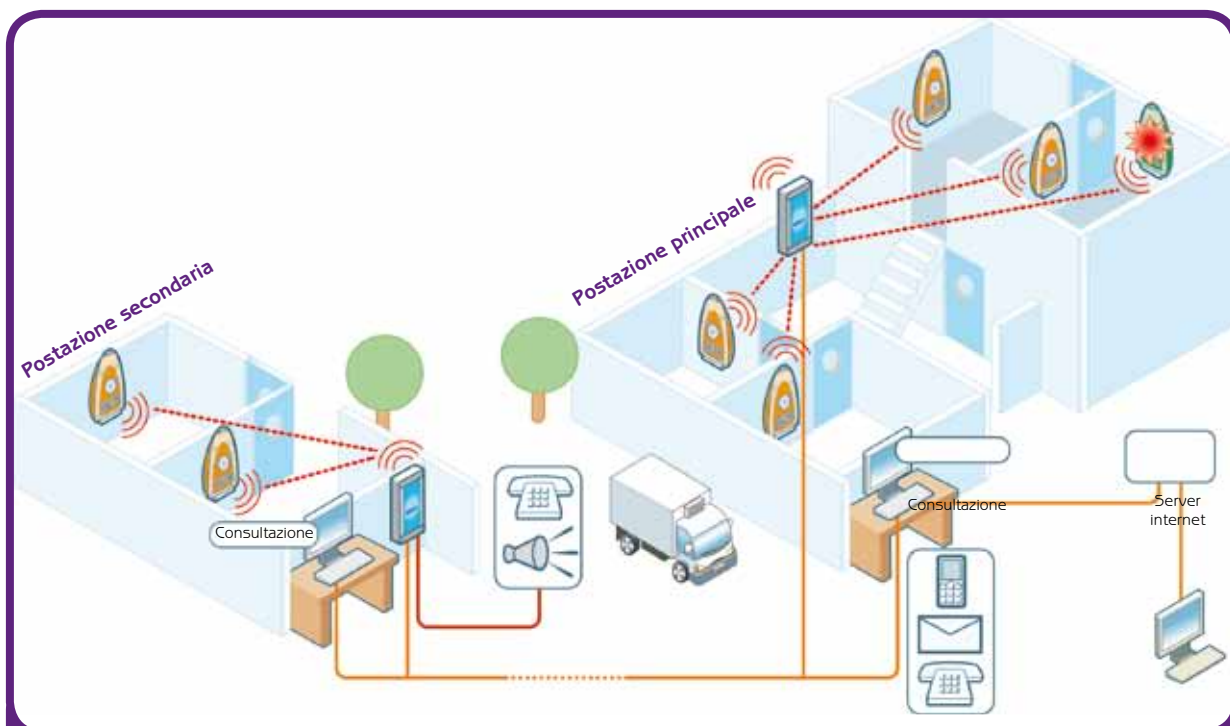


Controllo di temperatura e umidità in camere bianche

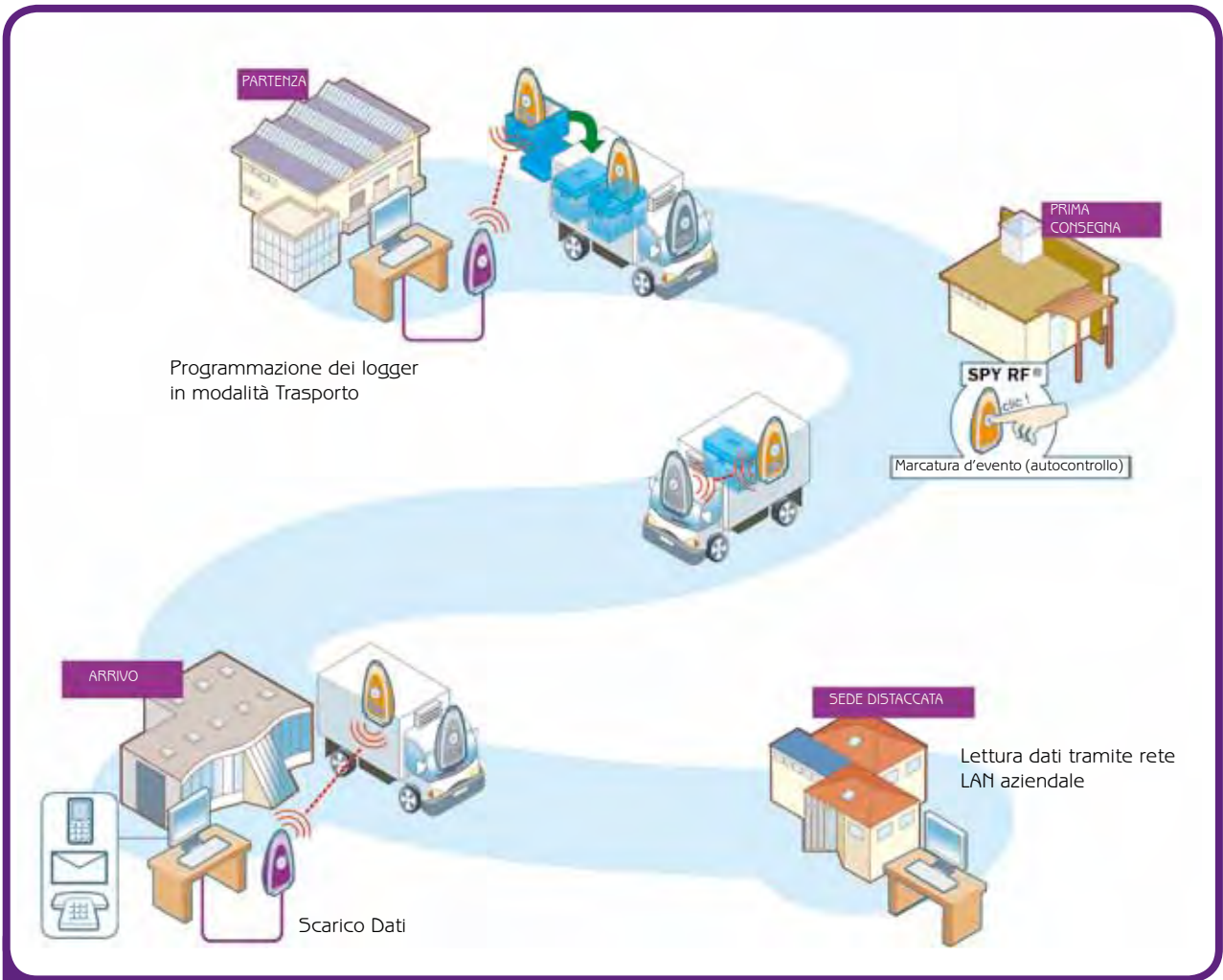
Esempi di configurazione



Configurazione media distanza con ripetitore radio e ricevitore USB collegato al PC



Configurazione grandi distanze con ricevitore LAN collegato alla rete dei PC aziendali



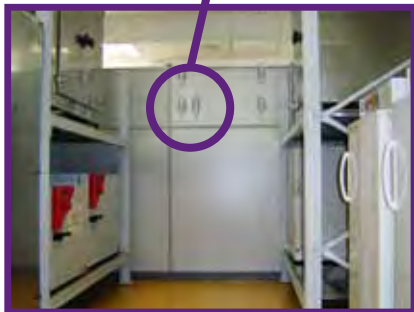
Configurazione per l'utilizzo dei logger Marconi SPY in modalità trasporto



Controllo della temperatura su Stufe



Controllo della temperatura su congelatore -80°C



Controllo temperatura incubatori